

InkRight™

SEMI-PERMANENT TATTOO

Beekley
Medical®

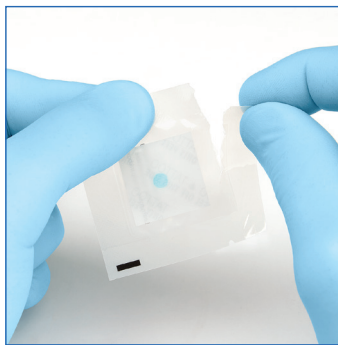
when your diagnosis
must be right®

InkRight™ semi-permanent tattoo
for use in clinical applications

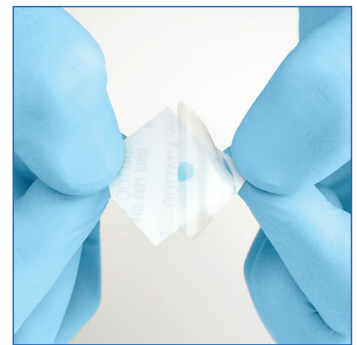
Instructions for Use:



1. Prep skin with Primer Wipe where InkRight™ tattoo will be applied. Wait 30 seconds for area to dry.



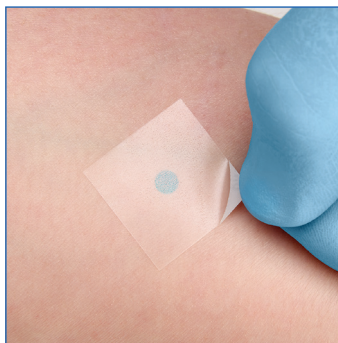
2. Open InkRight pouch and remove tattoo.



3. Hold corner tab and peel off backing.



4. Place and press InkRight tattoo on skin, adhesive side down to ensure full adhesion.



5. Instruct patient to remove adhesive cover from the skin after 2 hours.

Patient Guidance:

- Avoid excessive movement or sweating during 2-hour application time.
- Remove and discard adhesive cover after 2 hours.
- Normal activities can be resumed once the adhesive cover is removed.
- InkRight tattoo will appear light at first and will darken in 24-36 hours.

REF 510, 511

Manufactured by Beekley Corporation
One Prestige Lane, Bristol, CT 06010-7454 USA
Tel: 1.800.233.5539 Fax: 1.800.735.1234 beekley.com
For Customers Outside the US:
Tel: +1.860.583.4700 Fax: +1.860.584.2739

INKRIGHT is an unregistered trademark
of Beekley Corporation.
© – Reg. U.S. Pat. & Tm. Off.
© 2024 Beekley Corporation. All rights reserved.

WARNINGS AND PRECAUTIONS:

- Single Patient Use Only; Do Not Reuse (X)
- External Use Only
- Do Not Place on Compromised Skin
- Non-Sterile (A)
- Do Not Use If Sensitive Or Allergic to Dyes Or Inks

If any serious incident occurs in relation to this device, report it to Beekley Medical and to the competent authority of the Member State in which the user and/or patient is established.



CE

EC REP

EMERGO EUROPE
Westervoortsedijk 60
6827 AT Arnhem
The Netherlands